

# electro-com gen2 uhf rfid evaluation kit

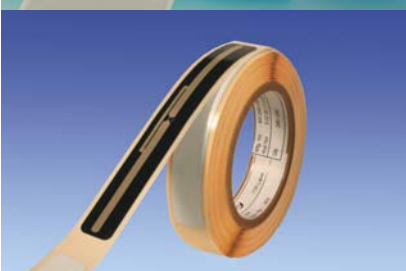
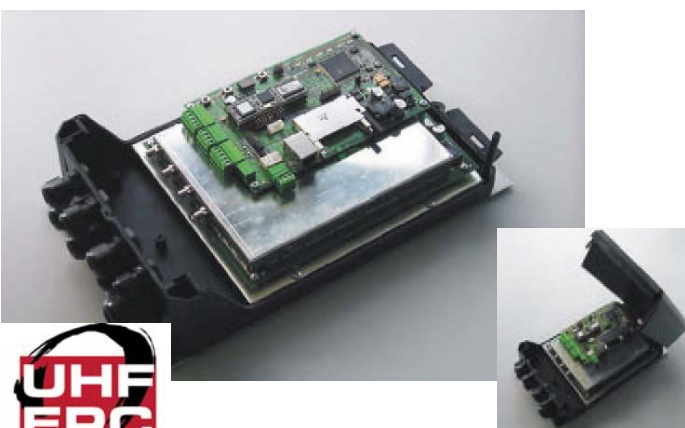
## UHF GEN2 EVALUATION KITS

Electro-Com's UHF Evaluation Kits give you the opportunity to explore the capabilities of UHF Gen2, EPC Radio Frequency Identification (RFID) technology.

The easy to use "plug and play" UHF Gen 2 Evaluation Kit consists of either a FCC or EU reader and a variety of multi protocol UHF tags.

The UHF reader from Electro-Com has a standard serial interface (RS232 & 485) that can be linked to a computer, so you can read and write to tags using the demo software provided in this kit.

The reader also has an Ethernet (TCP/IP) input with an IP address so it can be connected on a Local Area Network (LAN) and compact flash connection for wireless WLAN networks.



Items in this kit include the following:

Item	Part Number	Description	Quantity
UHF Reader	LRU-1000	UHF Reader with housing	1
Power Supply	MP-3212	13.5Vdc, 1.8A Non-Regulated	1
Comms Cable	WC-7534	RS232 D9 F/M (2m) Cable	1
<b>TAGS</b>			
Matrix	RI-ADM-RCL0	Matrix Adhesive Label – Class 0 (R/O)	5
Alien	RI-ADA-RCL1	Alien Adhesive Label – Class 1 (R/O)	5
Phillips	RI-ADP-RI6B	Phillips Adhesive Label – U-Code (R/O)	5
Texas Instruments	RI-ADT-WGN2	TI-RFID Adhesive Label – Gen 2 (R/W)	5
<b>ACCESSORIES</b>			
CD	UHF CD	Instructions, Manuals & Software	1

The Evaluation Kit comes with several choices:

Part Number: EK-LRU-FCC-CL0: Evaluation Kit with FCC reader (918-926MHz): Class 0, U-code & Gen2

Part Number: EK-LRU-FCC-CL1: Evaluation Kit with FCC reader (918-926MHz): Class 1, U-code & Gen2

Part Number: EK-LRU-EU-CL0: Evaluation Kit with EU reader (865-868MHz): Class 0, U-code & Gen2

Part Number: EK-LRU-EU-CL1: Evaluation Kit with EU reader (865-868MHz): Class 1, U-code & Gen2

Notes:

:: We can supply kits to read EPC Class 0 or Class 1 tags, if required.

:: RF regulations vary from country to country the readers in these evaluation kits will be configured only with a maximum power output of 1Watt.

:: Please consult the Communications Authority in your country to clarify the power and frequency limitations that apply.

:: Please consult us if you require alternative reader configuration.



electro-com

[Electro-Com (Australia) Pty Ltd]  
 PO Box 190, Mt Waverley VIC, 3149.  
 p.1300 130 806 f.1300 130 807  
 rfid@electrocom.com.au  
 www.rfid.com.au

